

Help me write a poem: Instruction Tuning as a Vehicle for Collaborative Poetry Writing

{Tuhin Charkrabarty, Vishakh Padmakumar}, He He



ML² Machine Learning
for Language



Natural Language Processing
Columbia University

Project Roadmap

- Can we train LLMs to satisfy creative writing instructions for poetry writing tasks?

Project Roadmap

- Can we train LLMs to satisfy creative writing instructions for poetry writing tasks?
 - Can LLMs compose instructions seen at train time in unseen combinations?

Project Roadmap

- Can we train LLMs to satisfy creative writing instructions for poetry writing tasks?
 - Can LLMs compose instructions seen at train time in unseen combinations?
- Can we help users complete creative writing tasks (poetry writing) using natural language instructions?

Project Roadmap

- **Can we train LLMs to satisfy creative writing instructions for poetry writing tasks?**
 - Can LLMs compose instructions seen at train time in unseen combinations?
- Can we help users complete creative writing tasks (poetry writing) using natural language instructions?

Dataset of Instructions

- Staying on Subject:

Write a poetic verse that ends in a word which rhymes with 'late'

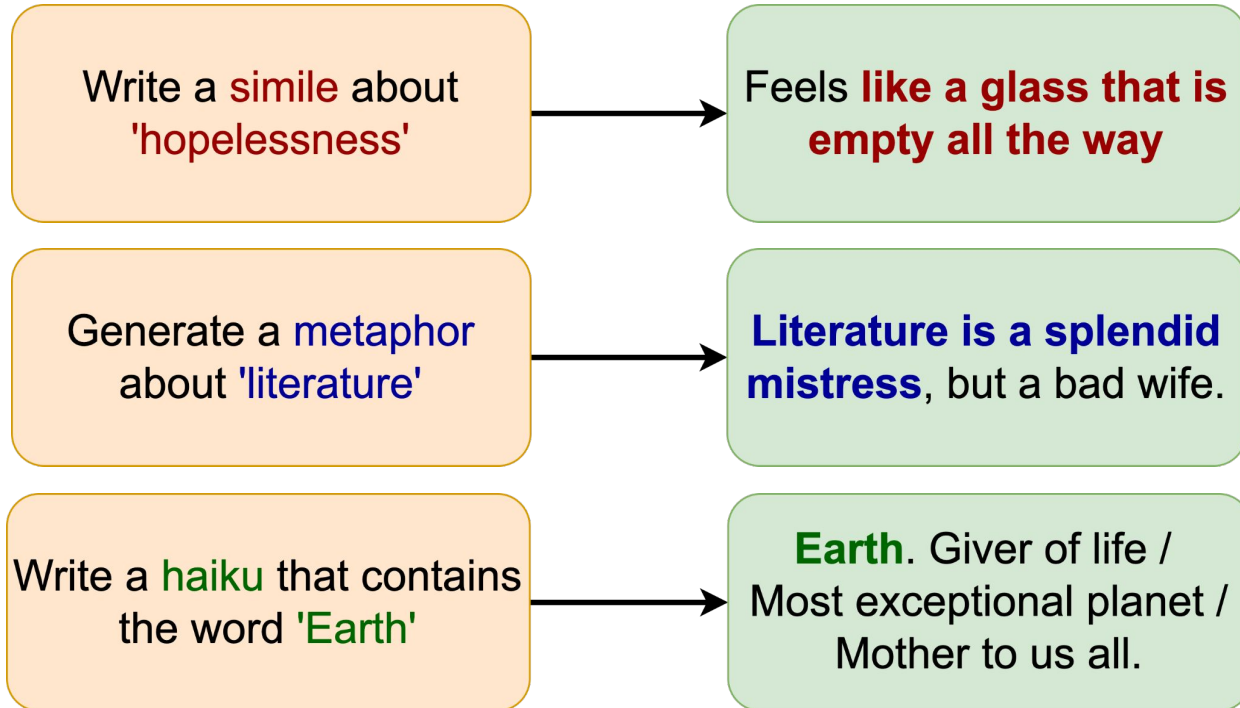
And homeward he turned,
his path now **straight**.

Write a poetic sentence about 'god' and ending in 'eyes'


An all-powerful **God**, no
escaping his **eyes**

Dataset of Instructions


- Control on Literary Devices:



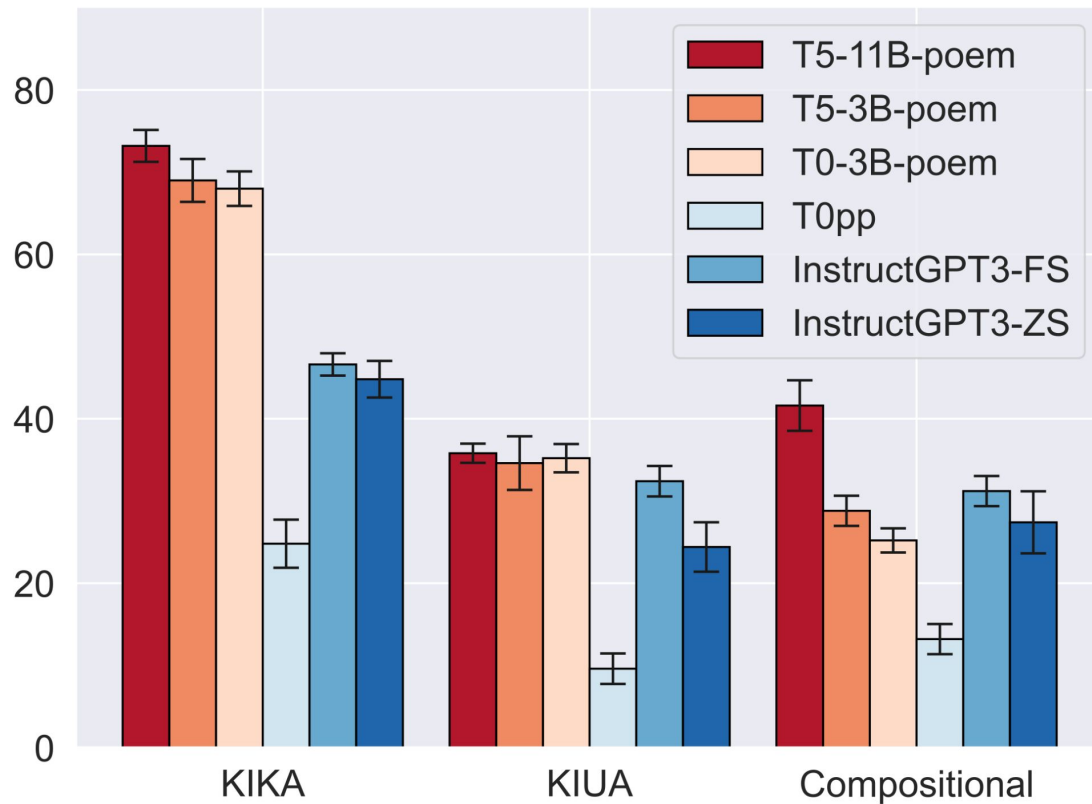
Instruction Tuning - Evaluation

- Models
 - **T5-3B and T5-11B**
 - T0 models 🙌
 - **T0 - 3B** Finetuned + **T0pp - 11B** Few-Shot
 - **InstructGPT - 175B** - Zero Shot + Few-Shot 

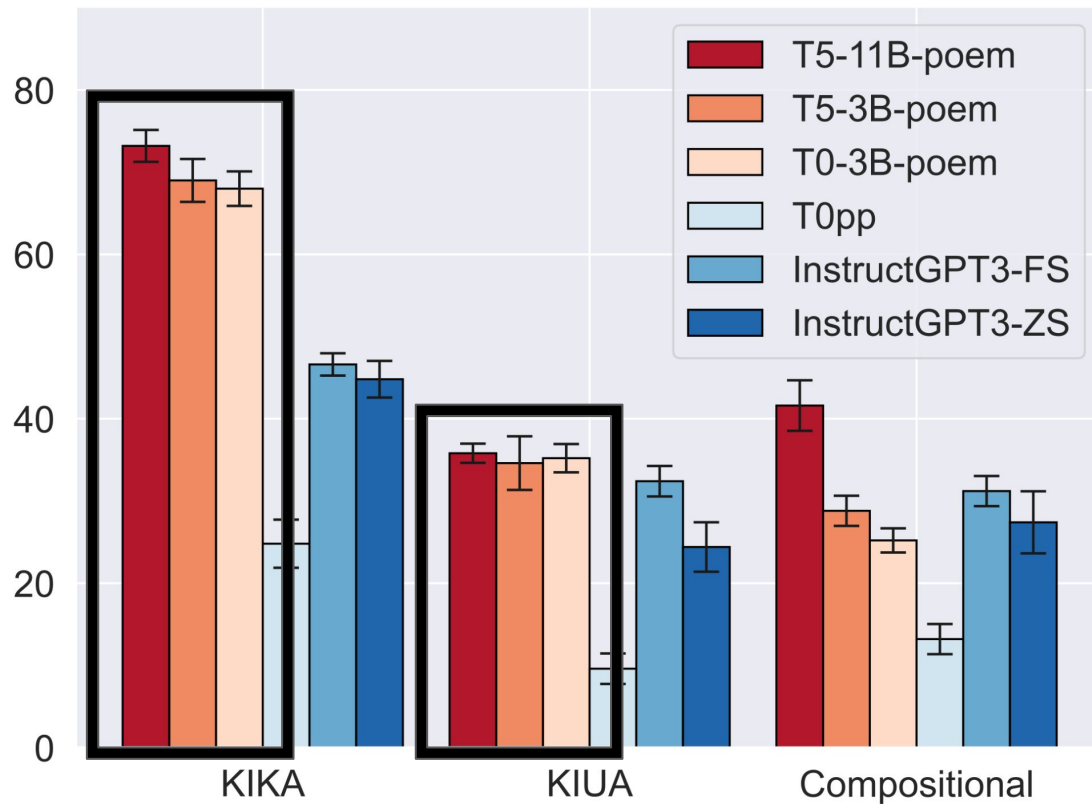
Instruction Tuning - Evaluation

- Models
 - **T5-3B and T5-11B**
 - T0 models 🙌
 - **T0 - 3B** Finetuned + **T0pp - 11B** Few-Shot
 - **InstructGPT - 175B** - Zero Shot + Few-Shot 
- Hand crafted test sets of instructions for different kinds of capabilities
 - Known Instruction Templates
 - Compositional Instruction Templates

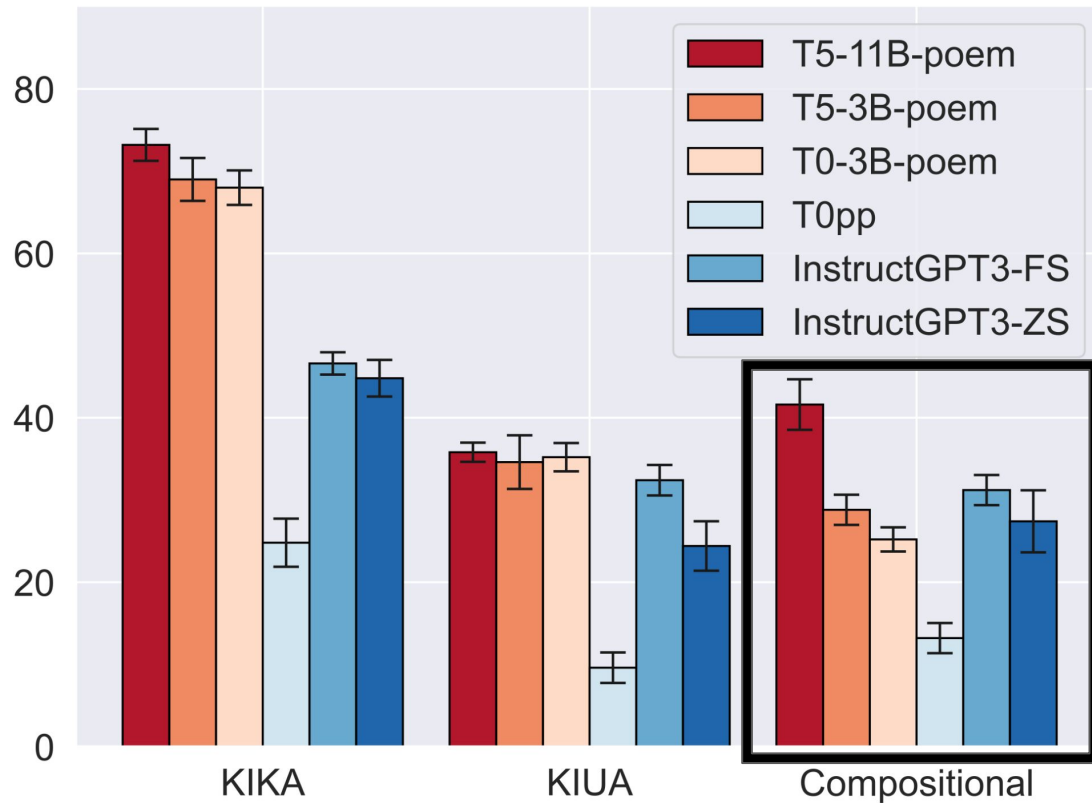
Instruction Tuning - Evaluation



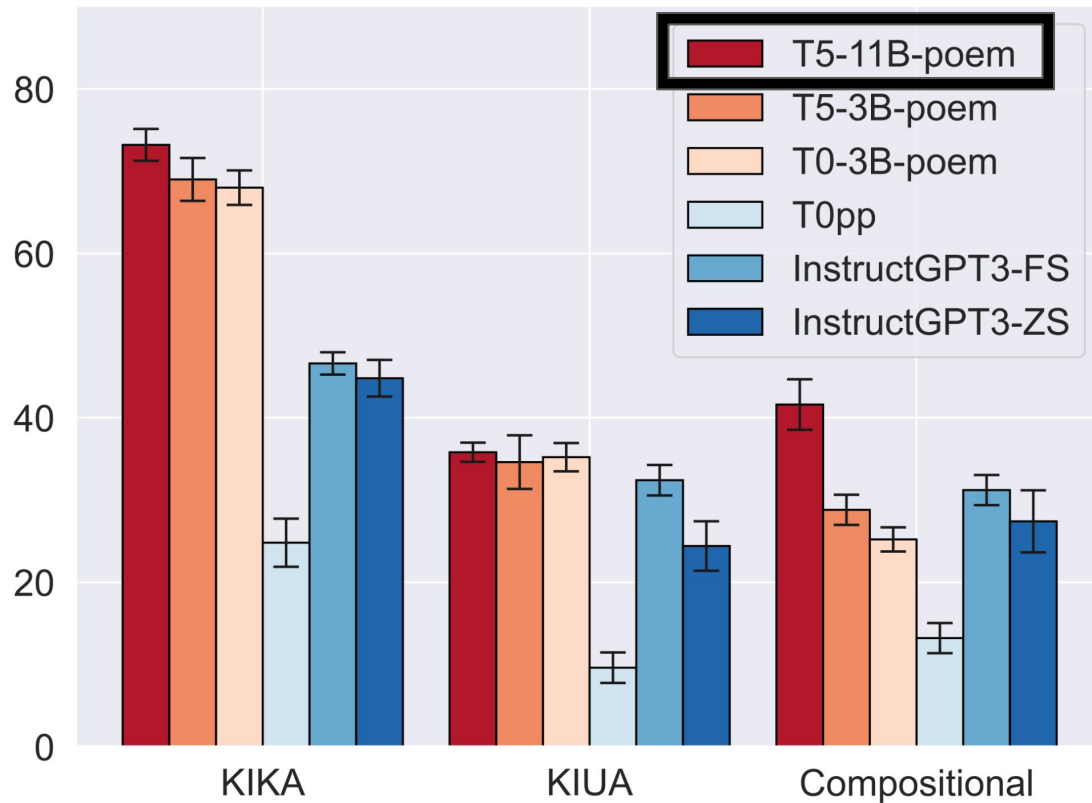
Finetuned Models Are Strong In-Domain But Drop on Out-Of-Domain Data



Larger Models Compose Instructions Better



We use T5-11B for the User Study.



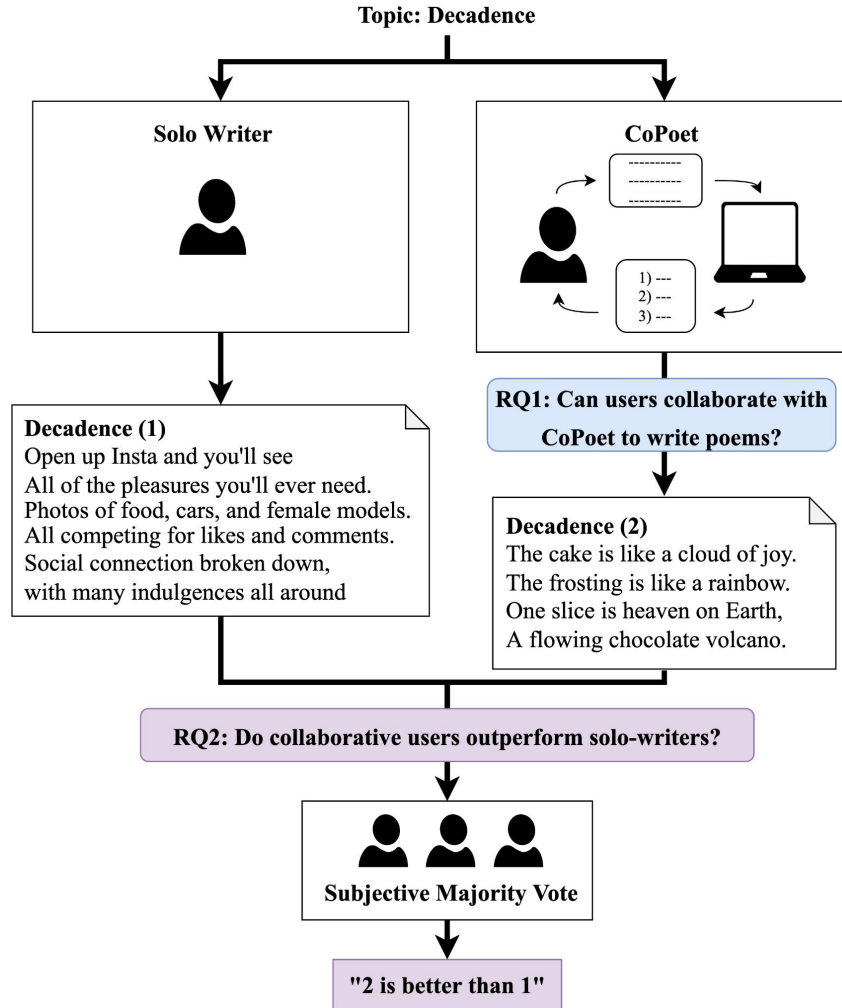
Project Roadmap

- **Can we train LLMs to satisfy creative writing instructions for poetry writing tasks?**
- Can we help users complete creative writing tasks (poetry writing) using natural language instructions?

Project Roadmap

- Can we train LLMs to satisfy creative writing instructions for poetry writing tasks?
- **Can we help users complete poetry writing using natural language instructions?**

Overview of User Study



Collaborative Writing Process

Poem Draft



My dreams shatter like a glass ceiling

My dreams shatter like a glass ceiling
As you walk away, dragging a broken
shard

My dreams shatter like a glass ceiling
As you walk away, dragging a broken
shard
I watch you leave, you no longer have
meaning

My dreams shatter like a glass ceiling
As you walk away, dragging a broken
shard
I watch you leave, you no longer have
meaning
As I lay there in the dark, my heart turns
hard



Interactions



Write a poetic sentence that contains
the word 'dreams'!

- And he who, in the dreams of the night.
- And in your dreams, I am with you.



Write a simile about 'shattered
dreams'!

- My dreams shattered like a glass bottle.
- My dreams shatter like a glass ceiling



Write a next sentence in a poetry given the previous
sentence 'My dreams shatter like a glass ceiling

- As you walk away, dragging a broken shard.
- When I see your empty eyes.



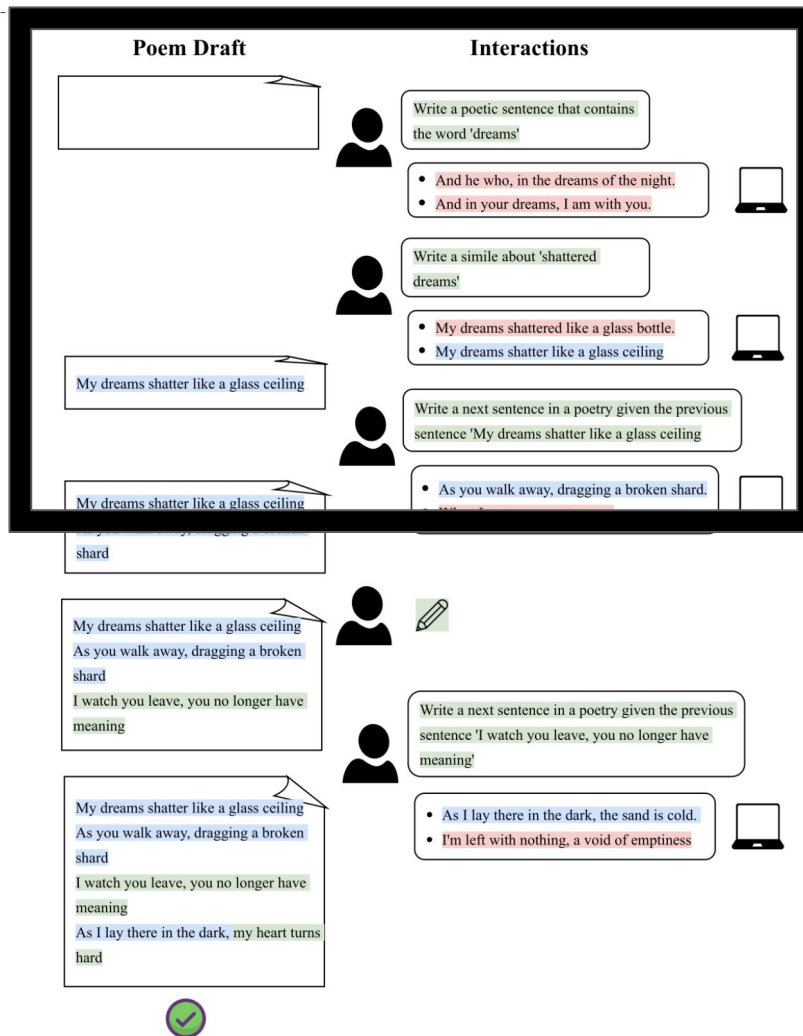
Write a next sentence in a poetry given the previous
sentence 'I watch you leave, you no longer have
meaning'



- As I lay there in the dark, the sand is cold.
- I'm left with nothing, a void of emptiness



Collaborative Writing Process



Collaborative Writing Process

Poem Draft



My dreams shatter like a glass ceiling

My dreams shatter like a glass ceiling
As you walk away, dragging a broken
shard

My dreams shatter like a glass ceiling
As you walk away, dragging a broken
shard
I watch you leave, you no longer have
meaning

My dreams shatter like a glass ceiling
As you walk away, dragging a broken
shard
I watch you leave, you no longer have
meaning
As I lay there in the dark, my heart turns
hard



Interactions



Write a poetic sentence that contains
the word 'dreams'!

- And he who, in the dreams of the night.
- And in your dreams, I am with you.



Write a simile about 'shattered
dreams'!

- My dreams shattered like a glass bottle.
- My dreams shatter like a glass ceiling



Write a next sentence in a poetry given the previous
sentence 'My dreams shatter like a glass ceiling

- As you walk away, dragging a broken shard.
- When I see your empty eyes.



Write a next sentence in a poetry given the previous
sentence 'I watch you leave, you no longer have
meaning'

- As I lay there in the dark, the sand is cold.
- I'm left with nothing, a void of emptiness



Findings

- Users are able to write thoughtful poems on diverse topics in collaboration with our model

Findings

- Users are able to write thoughtful poems on diverse topics in collaboration with our model
 - Large fractions of poems are written by the model, highlighting the effectiveness of instructions as a means of interaction

Findings

- Users are able to write thoughtful poems on diverse topics in collaboration with our model
 - Large fractions of poems are written by the model, highlighting the effectiveness of instructions as a means of interaction
- Users collaborating with our model writer *better* poems than solo-writers as judged by third-party annotators

For more details, check out our website and paper

